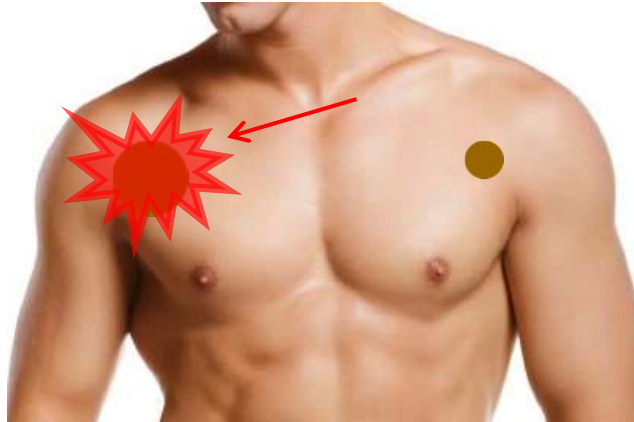
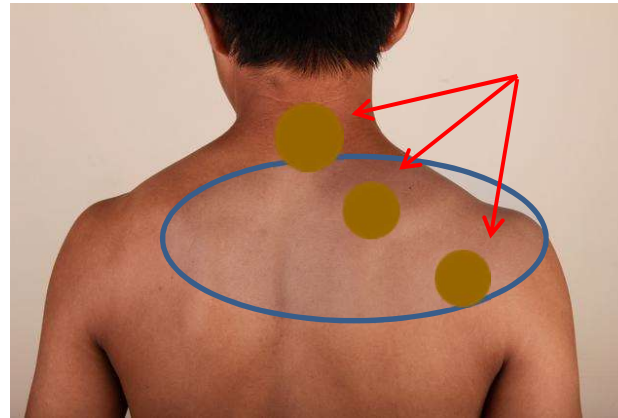


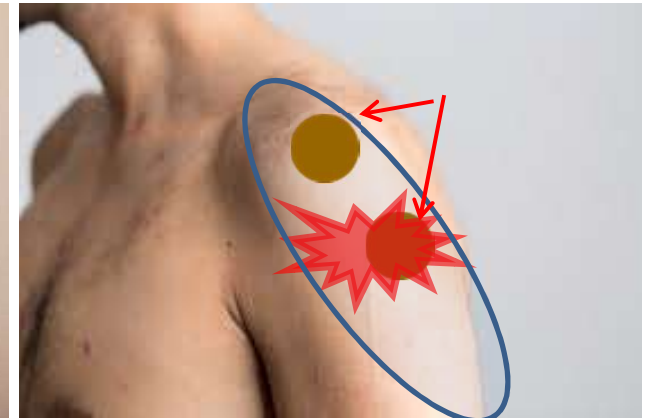
Application Shoulder



Place 1 patch on pain in soft spot at front of shoulder.



Place 1 patch on back of shoulder exactly opposite position of patch placed on front. Apply additional patches on any other points of tension or pain. Apply lotion over whole area for extra relief



If there is also pain on upper arm apply additional patches on area of pain as required. Apply lotion over whole area for extra relief

